

ETHEL R. LAWRENCE HOMES III

Affordable Townhomes



Rental Community



Developed By: Fair Share Housing Development, Inc. and The Walters Group

WALTERS  GROUP

Ethel R. Lawrence Homes III

Ethel R. Lawrence
(1926-1994)
has often been called
the “Rosa Parks
of affordable housing”.



In 2008, Governor Jon. S. Corzine honored Ethel R. Lawrence Homes by choosing it as the site for the signing of the first set of amendments to New Jersey’s Fair Housing Act. Ethel R. Lawrence Homes also won the New Jersey Excellence in Housing Award in 2001.

Praise for the apartment complex stems from its traditional town-house style design and special educational and social service support amenities as well as its storied history.



It took three decades of advocacy, citizen determination and litigation to build Ethel R. Lawrence Homes, NJ’s first affordable housing community in the suburbs to reach the very poor. Located on Moorestown-Mount Laurel Road, ERLH provides affordable housing to families generally earning between 10 percent to 60 percent of median income.

The namesake of the development was a woman who is known as the “Rosa Parks of affordable housing.” Ethel Lawrence was the lead plaintiff in the widely publicized Mount Laurel I (1975) and Mount Laurel II (1983), which stopped towns from shutting out the poor through exclusionary zoning.

Ethel R. Lawrence Homes III

Fair Share Housing Development, Inc.



*"Life is an opportunity to help others."
Peter J. O'Connor, Founder and Executive Director*

The mission of Fair Share Housing Development (FSHD) is to promote economically and racially diverse communities throughout the tri-county region surrounding the City of Camden, New Jersey through the development of affordable housing with supportive services in an effort to improve the lives of moderate-income, low-income and very low-income families, the elderly and disabled and to reverse decades of decline and segregation in the City of Camden by providing Camden City residents with the choice to reside in affordable housing in high-opportunity communities with access to decent jobs, good schools, and a safe environment.

FSHD was founded in 1986 by civil rights activists in response to the landmark Mount Laurel Doctrine, which prohibits towns from shutting out the poor through exclusionary zoning and requires each New Jersey municipality to plan, zone and take the necessary affirmative measures to provide realistic housing opportunities for its "fair share" of the regional need for affordable housing for low-income and moderate-income households, the elderly and disabled.

Since ERLH first opened in November, 2000, the development has been a beacon of hope for families that have been historically prevented by racial and economic discrimination from having the opportunity to live in a safe community with good jobs and a top-notch school systems.

TOWNHOME COMMUNITY

Phase III



Photos courtesy of Erin Jordan (FSHD staff photographer) and Mark Lozier.

Fair Share Housing Development and The Walters Group are pleased to introduce Ethel R. Lawrence III, an *income restricted townhome community.

This new community consists of 36 townhomes and are a part of the Mount Laurel Phase III master plan.

Fair Share Housing Development's Master Plan for Ethel R. Lawrence Homes completed its first 140 homes by the year 2004, completing Phase I of the project.

In 2003 Phase II of the project saw the opening of an 8,000 square foot Corporate Headquarters for FSHD to provide on-site management, maintenance and social services for the Ethel R. Lawrence Homes Community.

**AFFORDABLE HOUSING COMMUNITY*

Ethel R. Lawrence Homes III

Your New Home Will Be A
LEED® Certified, ENERGY STAR® Home!



LEED Certified for
clean, cost efficient
apartment living.

LEED-certified homes are healthier places to live,
produce lower utility bills, have better air quality
and leave a smaller environmental footprint behind.

Leadership in Energy and Environmental Design (LEED) is a rating system devised by the United States Green Building Council (USGBC) to evaluate the environmental performance of a building and encourage market transformation towards sustainable design.

*For more information on LEED please visit usgbc.org
Ask your leasing consultant for a complete LEED checklist!*



Ethel R. Lawrence III Townhomes are registered with the
U.S. Green Building Council and will pursue certification under
USGBC's LEED® program (Leadership in Energy and Environment Design).



Fair Share Housing Development, Inc.
www.fairsharedevelopment.org

TOWNHOME Features



- One, Two and Three-bedroom Townhomes
- Upgraded Interior Finishes in each Townhome:
 - Full Size Washer and Dryer in each Residence
 - Fully Equipped Kitchen including Dishwasher and Garbage Disposal
 - Mini-Blinds on each Window
 - Woodgrain Resilient, Vinyl Planking in the Main Living Areas, Carpeting in the Bedrooms and Ceramic Tile in Baths
- Maintenance Free Living
- On Site Management and Maintenance
- Patio Area for each Unit
- Green Building and ENERGY STAR[®] Appliances

Ethel R. Lawrence Homes III

COMMUNITY Amenities



MARGARET DONNELLY O'CONNOR EDUCATION CENTER

The Margaret Donnelly O'Connor Education Center at Ethel R. Lawrence Homes provides a safe, positive, nurturing environment where our resident children can receive individual academic assistance and social support from qualified individuals at no cost to the family. In partnership with the Mount Laurel school system, parents and the local community, the Education Center staff helps students hone in on the skills they need to thrive academically.

- After School Homework Club
- Enrichment Programs
- Digital Storytelling
- Book Club for Teens
- Children's "Tot Lots"



- College Workshops
- Teen Leader/Volunteer Program
- Arts & Crafts
- Computer Work Stations
- BBQ & Picnic Area

- Basketball Courts
- Outdoor Recreation Area

COMMUNITY Site Plan



Ethel R. Lawrence Homes III

COMMUNITY In Your Neighborhood



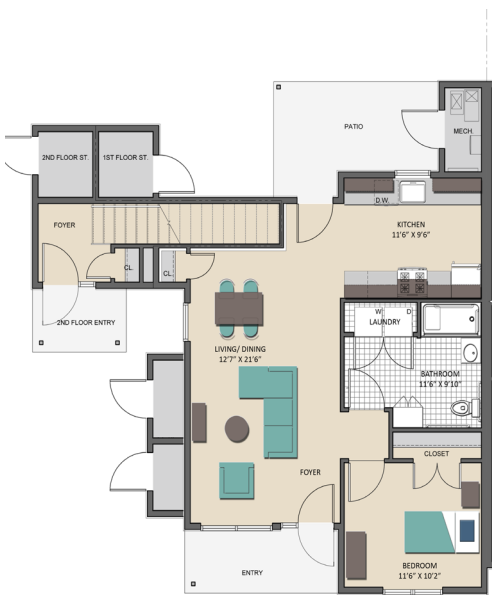
- Close proximity to all Mount Laurel schools
- Local supermarkets, specialty shops and large brand retailers
- Multi-denominational places of worship
- A network of local medical facilities including: Virtua Voorhees Hospital and Garden State Community Hospital
- Public Bus Transportation: Greyhound Bus /Station, 538 Fellowship Rd.
- A short drive to Moorestown Mall & Regal Cinemas
- 4 miles to The Funplex, indoor-outdoor amusement park
- 35 minutes to Philadelphia
- A short drive to Rancocas State Park
- Close proximity to the New Jersey Turnpike and Interstate 295 (I-295)

TOWNHOME Floorplans



ONE BEDROOM FLOORPLANS

Total Square Feet: Between 783 - 905 SF*



FIRST FLOOR



SECOND FLOOR

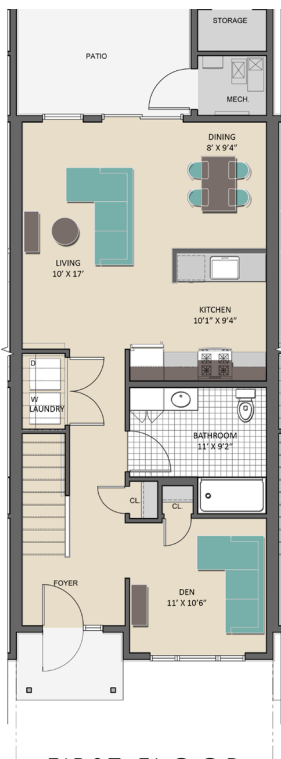
*All dimensions are approximate and subject to field variation.
Floorplan sizes and configurations vary depending on building/floor location.

Ethel R. Lawrence Homes III



TWO BEDROOM FLOORPLANS

Total Square Feet: 1,346 SF*



FIRST FLOOR

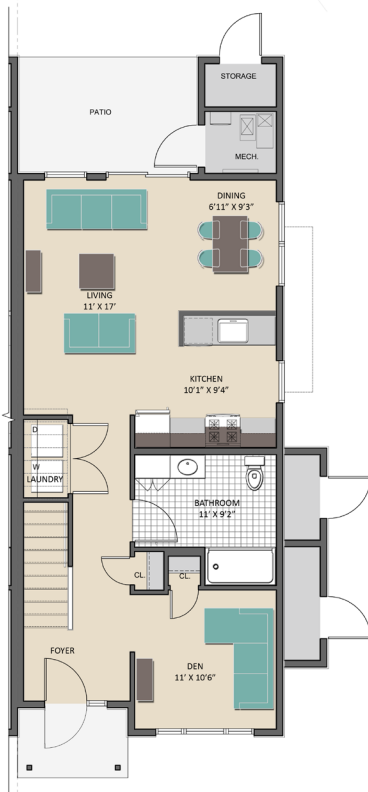


SECOND FLOOR

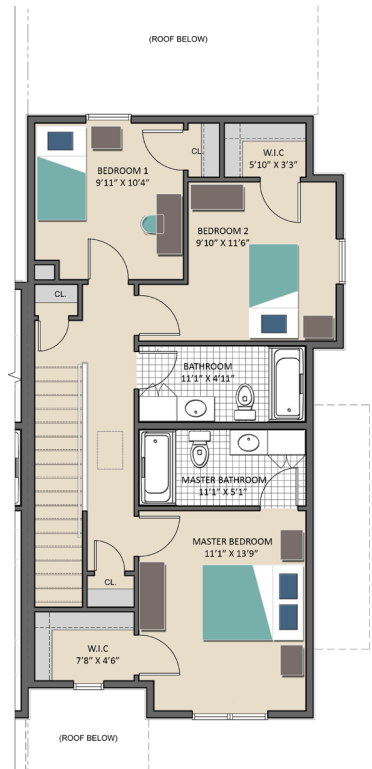
TOWNHOME Floorplans

THREE BEDROOM FLOORPLANS

Total Square Feet: 1,572 SF*



FIRST FLOOR



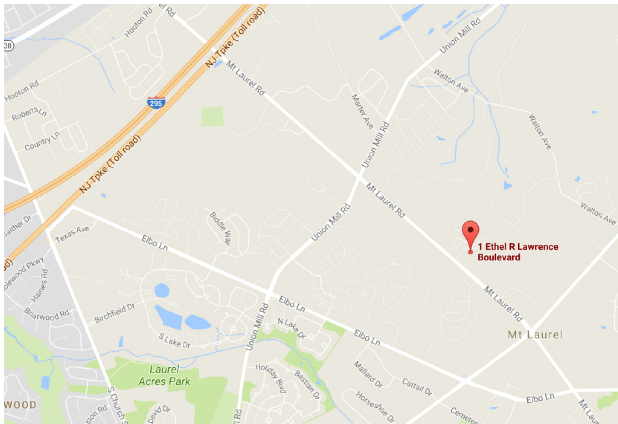
SECOND FLOOR

**All dimensions are approximate and subject to field variation.
Floorplan sizes and configurations vary depending on building/floor location.*

Ethel R. Lawrence Homes III



Ethel R. Lawrence Homes III are located at:
1 Ethel Lawrence Boulevard, Mount Laurel, New Jersey 08054



DIRECTIONS:

From Camden/Cherry Hill:

Take Route 38 East – go 4 lights past Moorestown Mall – turn right on Mount Laurel Road – go 1/3 mile past 2nd light – ERLH development on left.



From Burlington County:

Take 295 South to Moorestown exit – go past 2 lights and take jug handle at 2nd light and cross over Mount Laurel Road – go 1/3 mile past 2nd light – ERLH Development on left.



Developed By: Fair Share Housing Development, Inc. and The Walters Group

WALTERS ♦ GROUP

Fair Share Housing Development, Inc.
1 Ethel Lawrence Boulevard, Mount Laurel, NJ, 08054
(856) 793-9526 | info@fairsharedevelopment.org
www.fairsharedevelopment.org